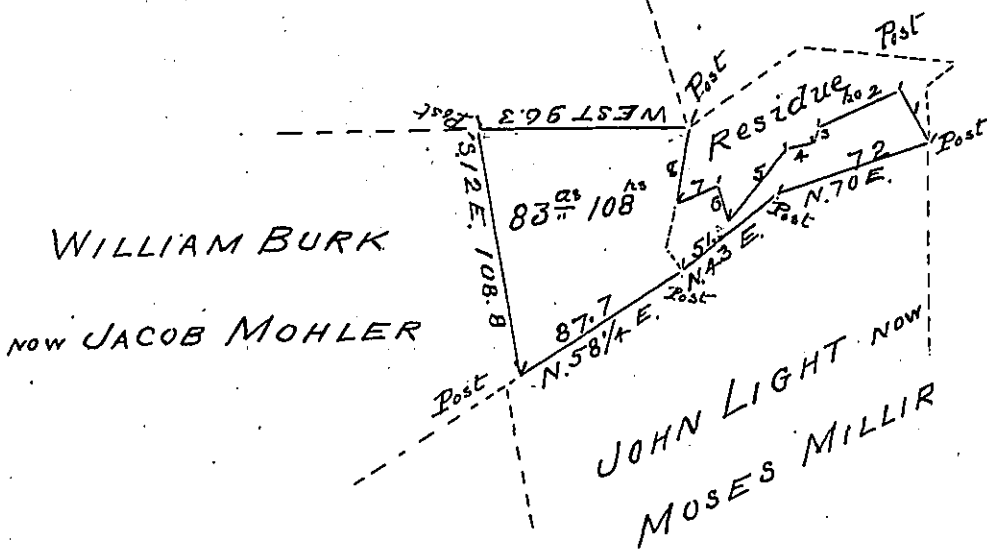


JOHN MORRIS JUN.

NOW SAMUEL MITCHEL



- 1 N. 30 W. 24 Post
- 2 S. 60 W. 44 Post
- 3 S. 14 E. 3.7 Post
- 4 S. 61 1/2 W. 13 Post
- 5 S. 40 W. 39 Post
- 6 N. 20 1/4 W. 15.4 Post
- 7 S. 60 W. 21.3 Post
- 8 N. 10 E. 36 Post

A draught of a tract of Land situate in Perry township Mifflin County Containing 83 acres and 108 perches and the usual allowance of six percent for roads &c. which appears to be comprised of one entire tract & a part of another. A tract in the name of James Cupples his warrant dated the 31st day of August 1835 Surveyed the 2nd day of September 1835. The other a part of a tract Surveyed the 2nd day of May 1789 in pursuance of a Warrant to Samuel Beard dated the 24th day of March 1789. The above Examined this 21st day of Nov- for and at the request of Moses Miller the present owner

David Howagh
 To J. Porter Brawley Esq. For John R. Weekes Esq.
 Surveyor Genl. of Pa.

Order of the B^d. of Property 22^d Jan'y 1790

IN TESTIMONY that the above is a copy of the original remaining on file in the Department of Internal Affairs of Pennsylvania, made conformably to an Act of Assembly approved the 16th day of February, 1833, I have hereunto set my Hand and caused the Seal of said Department to be affixed at Harrisburg, this twenty fifth day of January 1904.

Lucas B. Brown
 Secretary of Internal Affairs.